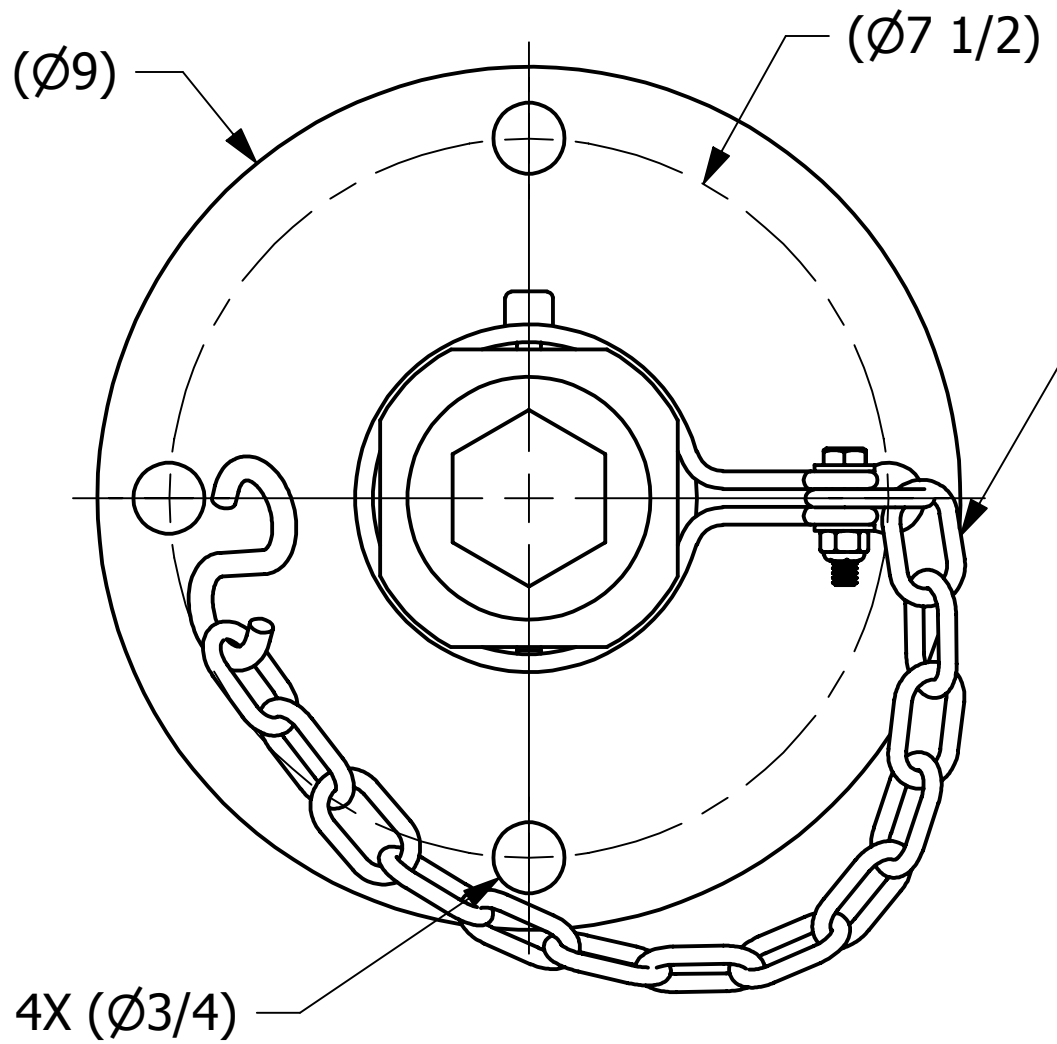
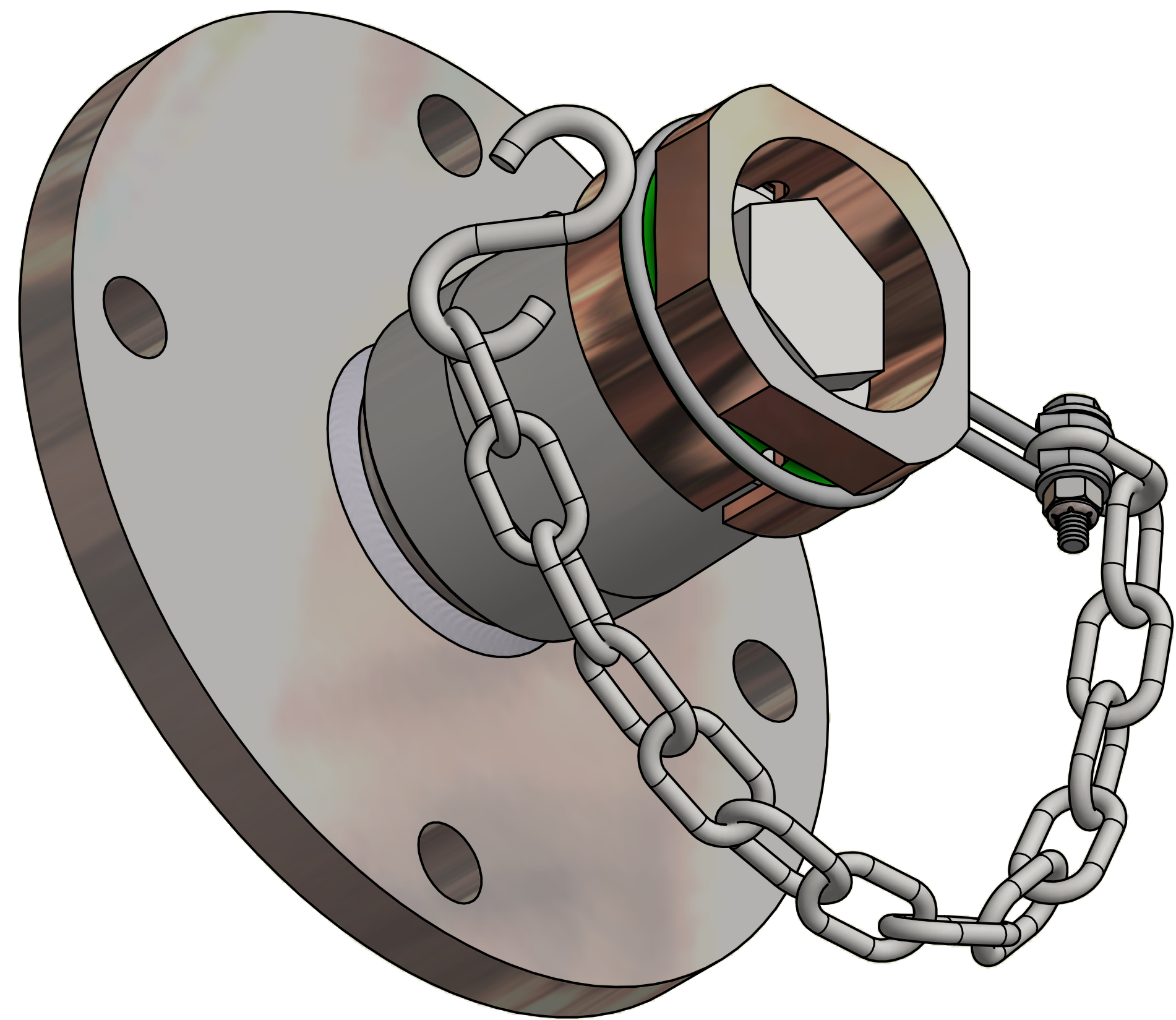


SALES DRAWING SALES DRAWING

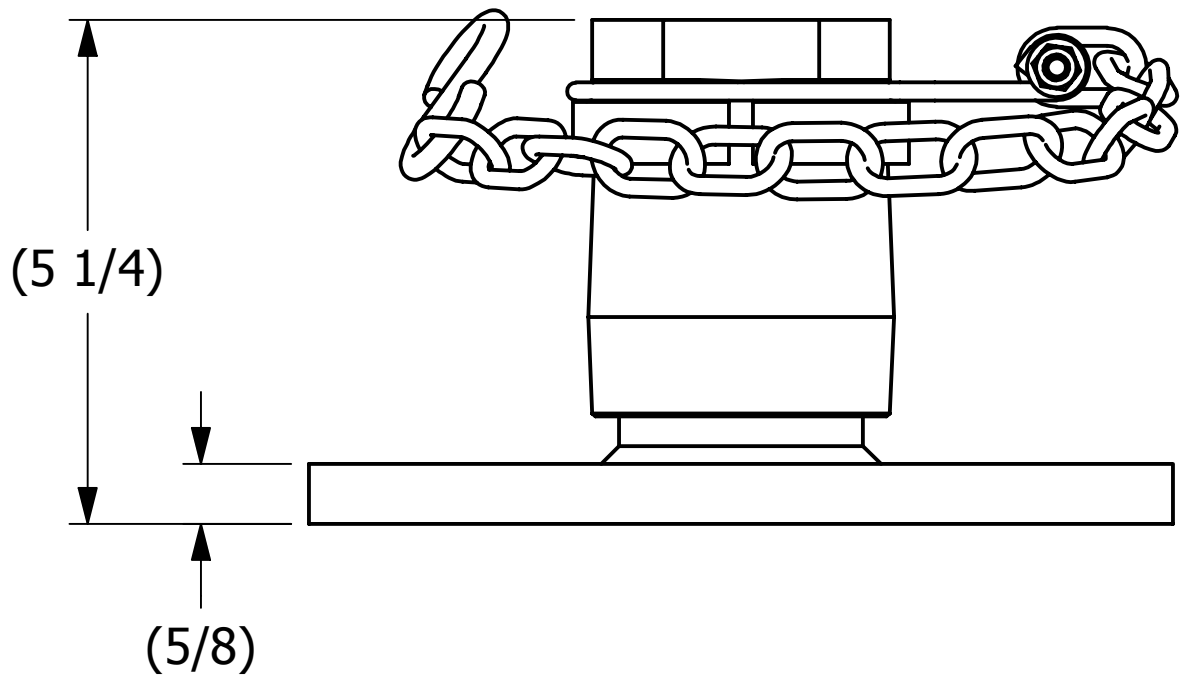
SALES DRAWING SALES DRAWING



14 LINKS 3/16" 18-8 SS  
LENGTH APPROXIMATELY 14"



ISOMETRIC VIEW  
SCALE 1 : 1



- NOTES:
- GASKET MATERIAL IS BLACK VITON B.
  - SLOT CUT IN THREADS OF CAP FOR SAFETY PRESSURE RELIEF.

THIS PRINT, PROPERTY OF SALCO PRODUCTS INC., CONTAINS PROPRIETARY INFORMATION AND MUST NOT BE COPIED, REPRODUCED, OR USED DETRIMENTALLY TO OUR INTEREST.

<small>UNLESS OTHERWISE SPECIFIED DIMENSIONAL TOLERANCES FRACTIONAL: ±1/16 X.XX: ±.03 X.XXX: ±.015 ANGLE: ±1° DEBURR ALL SHARP EDGES. ALL MACHINED SURFACES TO HAVE A 125 RMS FINISH UNLESS NOTED OTHERWISE.</small>	DRAWN BY:	WEB
	CHECKED BY:	EJF
	PROTOTYPE BY:	WEB
	PROTOTYPE DATE:	4/10/2017
	APPROVED FOR PRODUCTION BY:	EJF
THIRD ANGLE PROJECTION	PRODUCTION DATE:	4/28/2017

A	WEB	4-28-17	RELEASED FOR PRODUCTION
REV	BY	DATE	DESCRIPTION
PART NAME: TOP FITTING ASSEMBLY 2" FLANGED			
MATERIAL: 316L SS			
PROJECT #: R170407F		SHEET #: 1 OF 1	SCALE: 1:2
DRAWING #: C45288		PART #: TE20S75H4DLP07A	